

MARIÙ pendant lamp

Pendant lamp with quilted faux leather shade available in either white or black. White or black painted metal structure matching the lampshade. Ceiling and Pendant fittings have opal PMMA diffusers with either a 60cm or a 100cm diameter, depending on the fitting. The pendant lamps are complete with fabric cabling.

TECHNICAL DETAILS

Environment: indoor
Mounting: pendant lamp
Net weight (kg): 3,2

Electrification and code:

WHITE COD. 013301

BLACK COD. 013300

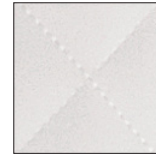
E27 3X105W A55 

E27 3X12W CLASSIC A LED

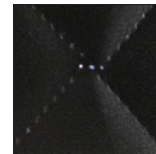
Certifications:



FINISHING



white



black



Light emission

